

PORT TERMINALS AND AREAS

# A COMMITTED AND RESPONSIVE PORT COMMUNITY



# 1.5%

**INCREASE IN TRAFFIC  
BETWEEN 2018  
AND 2019**

---

# 16%

**OF MODAL SHIFT  
TO RAILWAY IN 2019**

---

# €80million

**OF PUBLIC  
INVESTMENTS  
ANTICIPATED BY 2025**

---

# 6<sup>th</sup>

**MAJOR FRENCH  
SEAPORT**

---

## A COMMITTED AND RESPONSIVE PORT COMMUNITY

A protected deep-water port in the centre of the French Atlantic arc, the Grand Port Maritime de La Rochelle is a major player in the area's economic development, business logistics and ecological transition.

Its special geographical position makes it accessible 24 hours a day, 7 days a week, even in difficult weather conditions.

Pre and post-shipment are carried out conveniently thanks to road and rail connections.

A pioneer among French ports, the Port has set up a port rail operator whose purpose is to promote modal shift for more sustainable logistics.

The quality of port infrastructure is combined with its diversity to serve multi-purpose traffic. In addition to transit of goods, activities with high added value – such as the refitting of mega yachts or vessels at the shipbuilding and repair hub, berthing cruise ships or players in renewable energies such as wind power – are encouraged by the quality of service.

The Port maintains strong ties with communities, educational and research organisations, and especially with businesses in the port community.

---

# €1billion

**OF ADDED VALUE**

---

# 1,715

**DIRECT JOBS  
IN LA ROCHELLE**

---

# 4 575 MWh

**GENERATED BY  
PHOTOVOLTAIC PANELS  
INSTALLED AT  
THE PORT SITE**

---

# 7.18 ha

**OF COMPENSATION AREA  
FOR BIODIVERSITY  
PRESERVATION**

---

# PORT TERMINALS AND AREAS

## ADMINISTRATIVE BOUNDARIES

TOTAL SURFACE: 554 ha • LAND SURFACE: 276 ha INCLUDING 56 ha OF LAND RESERVE • MARITIME SPACE: 278 ha

The depths indicated may be subject to variations. Approach the Harbour Office at +33 (0)16 46 00 56 30 to confirm the height of water available at the wharves in question.



**DO YOU HAVE A PROJECT TO IMPLEMENT IN LA ROCHELLE?  
PLEASE CONTACT OUR MARKETING AND WEALTH DEPARTMENT  
AT +33 (0)5 46 00 56 09.**

**1 LA REPENTIE**

- Associated surface: 52 ha
  - Open areas: 48 ha
- Covered areas: 6,000 m<sup>2</sup>
  - Rail connection
- 1 quay at the planning stage



**2 ANSE SAINT-MARC**

- Multipurpose terminal
  - Surface area: 38 ha
  - Open areas: 29 ha
- Bearing capacity of the quay: 6 t/m<sup>2</sup>
  - Covered areas: 5.7 ha
- 2 high-speed conveyor belts (up to 900 t/h)
  - 1 dust collection hopper
  - Rail connection
- Stevedore company: Etablissement Vraquier de l'Atlantique (EVA)



**3 LOMBARD**

- Solid and liquid bulk terminal
- Surface area: 12.5 ha
- 2 gantry cranes (loading rates up to 2,500 t/h)
- Dedicated open areas: 10 ha
- Stevedore company: Sica Atlantique Group



**4 SERVICE PORT**

- Dedicated area: 4.5 ha
- Number of berths: 20
- Draught: up to 4.80 m



**5 JEUMONT**

- Associated surface: 9.6 ha
- Direct access to the bypass
- Immediate proximity to the urban centre



**6 LOCK BASIN**

- 8 berths including 1 ro-ro
- Access through a lock of 21.30 m inside width and 165 m inside length
- Associated surface: 40 ha
- Dedicated open areas: 30 ha
- Bearing capacity of the quay: 6 t/m<sup>2</sup>
- Covered areas: 4.2 ha
- Rail connection
- Stevedore company: Agence Maritime La Pallice (AMLPL)



**7 SHIPBUILDING AND REPAIR HUB**

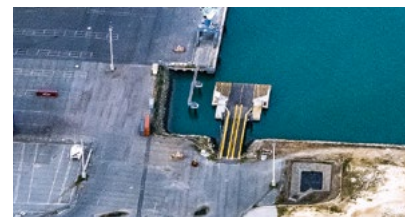
- 2 types of dry dock
  - Dedicated area: 10 ha
- Open areas: 3 ha including 6,000 m<sup>2</sup> open area for repair
  - Central groyne of the dock: length of 2 x 200 m
  - Afloat repair dock equipped with a 90 m floating dock
    - 1 250-tonne boat lift
  - Emergency supplied 1,000 kVA electrical substation
- Fully secured area 24 hours a day
- All services available upon request



**8 RO-RO 2 RAMP**

**Dimensions :**

- Front of the quay length: 32 m, hollow 3.80 m
- Access gangway: 54 m x 9 m wide open to traffic
- Bearing capacity: 120 t



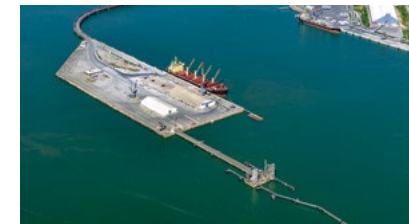
**9 CHEF DE BAIE**

- Multipurpose terminal
- Surface area: 66 ha
- Dedicated open areas: 57 ha
- Bearing capacity of the quay: up to 6 t/m<sup>2</sup>
- Covered area: 4 ha
- One loading gantry at 1,600 t/h
- Rail connection
- Stevedore company: Agence Maritime La Pallice (AMLPL)



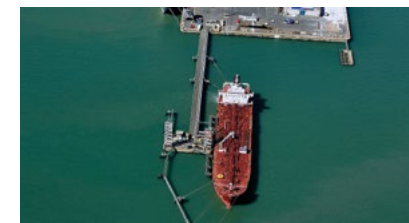
**10 MÔLE D'ESCALE**

- Multipurpose terminal
- Surface area: 8 ha
- Open areas: 5.6 ha
- Bearing capacity of the quay: up to 6 t/m<sup>2</sup>
- Covered areas: 5,751 m<sup>2</sup>
- "Sorata" cruise station for passenger liner calls
- Stevedore companies:
  - Môle West: Agence Maritime La Pallice (AMLPL)
  - Môle East: Etablissement Vraquier de l'Atlantique (EVA)



**10 OIL TERMINAL**

- Enables to berth 2 ships simultaneously
- 3 oil pipelines with unloading rates of up to 4 000 m<sup>3</sup>/hour



# DISTINGUISHED GUESTS



**FRANÇOIS-GEORGES KUHN,**  
KUHN MARITIME GROUP

*"In La Rochelle, the exceptional nautical access that contributes to the speed of port calls and the versatility of the docks are major assets in terms of logistics.*

*A key player in French ports, the Kuhn Maritime Group is a specialist in port handling. Thanks to the professionalism and specific know-how of our local agencies and our teams, we offer our customers all port services and activities dedicated to ships and goods, for import and export, anywhere in France. It is at the Port of La Rochelle that we have developed a specific know-how in logistics for heavy packages."*



**MARIO RINALDI,**  
SICA ATLANTIQUE GROUP

*"Thanks to the nautical potential of the Port and the quality of its infrastructure, we provide improved service to our customers. Respect for product integrity, quality, and safety are our priorities. Raw materials, components or additives, liquid bulk products are essential to many sectors of activity in the industrial, agriculture, energy sectors, etc. For import or export, they pass through the port facilities to the operating sites. We provide tailor-made services in our field of expertise and our land reserve is a major asset for developing partnerships."*



**MAXIME LEGENDRE,**  
LECAMUS COMPANY

*"La Rochelle is a dynamic port, equipped with beautiful infrastructure and with constantly evolving services. The Lecamus shipyard located in the Port is a key player in ship repair, port and industrial maintenance. Our production workshop has high-performance tools as well as qualified and responsive employees to cover most maintenance requirements, both on ships and on port infrastructure, for repairs as well as for scheduled technical shutdowns."*

## PORT ATLANTIQUE LA ROCHELLE

141 boulevard Émile Delmas  
CS 70394 - 17001 La Rochelle Cedex 1  
Tel. +33 (0)5 46 00 53 60  
contact@larochelle-port.eu  
[www.larochelle.port.fr](http://www.larochelle.port.fr)

